

D578

ARDF DF3060

REVISION HISTORY		
Page	Date	Added/Updated/New
		None

ARDF DF3060 (D578)

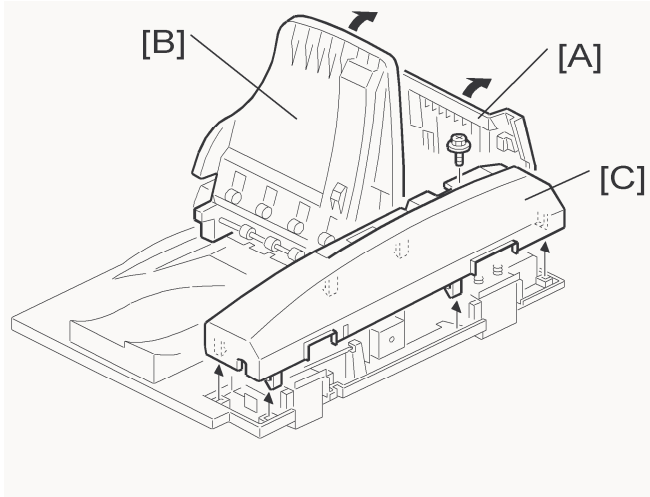
TABLE OF CONTENTS

1. REPLACEMENT AND ADJUSTMENT	1
1.1 COVERS AND TRAY	1
1.1.1 REAR COVER	1
1.1.2 FRONT COVER AND ORIGINAL TRAY	2
1.2 DOCUMENT FEED COMPONENTS	3
1.2.1 ORIGINAL FEED UNIT	3
1.2.2 PICK-UP ROLLER	3
1.2.3 FEED BELT	4
1.2.4 SEPARATION ROLLER	5
1.3 ELECTRICAL COMPONENTS	6
1.3.1 ARDF DRIVE BOARD AND DF POSITION SENSOR	6
1.3.2 ORIGINAL LENGTH SENSORS AND TRAILING EDGE SENSOR	7
1.3.3 ORIGINAL SET SENSOR	8
1.3.4 ORIGINAL SIZE SENSORS AND SKEW CORRECTION SENSOR	8
1.3.5 STAMP SOLENOID AND ORIGINAL EXIT SENSOR	9
1.4 ORIGINAL FEED DRIVE	10
1.4.1 FEED MOTOR	10
1.4.2 PICK-UP SOLENOID	11
1.4.3 INVERTER SOLENOID	12
1.4.4 FEED CLUTCH	13
1.4.5 TRANSPORT MOTOR	14

1. REPLACEMENT AND ADJUSTMENT

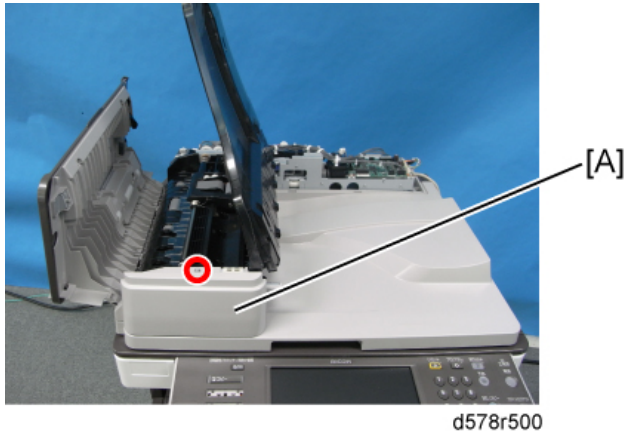
1.1 COVERS AND TRAY

1.1.1 REAR COVER



1. Open the left cover [A].
2. Open the original tray [B].
3. Rear cover [C] (⚙️ x 1, hook x 6)

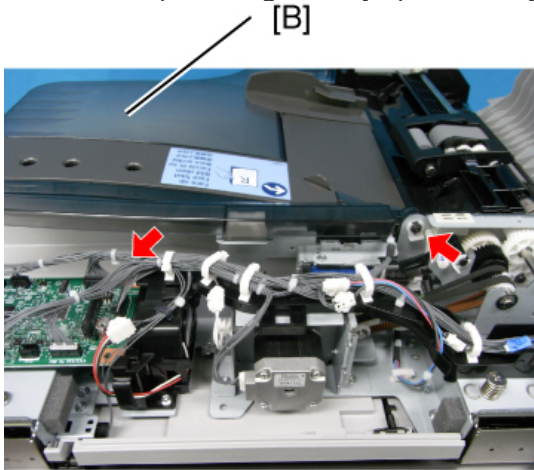
1.1.2 FRONT COVER AND ORIGINAL TRAY



1. Open the left cover.
2. Rear cover (Refer to p.1 "Rear Cover")
3. Front cover [A] (x 1)

Note

- Keep the original tray open when you remove the front cover.



4. Original tray [B] (x 1, x 1)

1.2 DOCUMENT FEED COMPONENTS

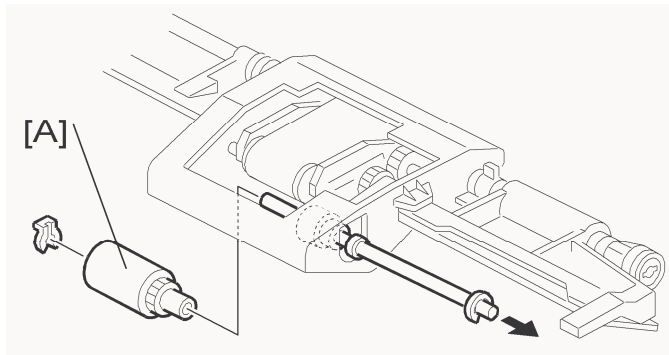
1.2.1 ORIGINAL FEED UNIT



d578r502

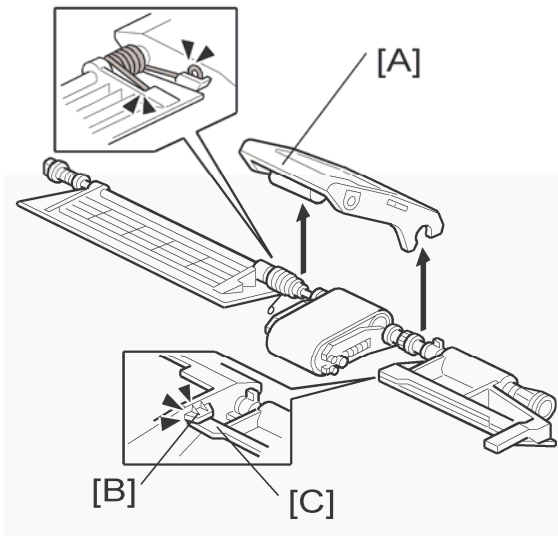
1. Open the left cover.
2. Original feed unit [A].

1.2.2 PICK-UP ROLLER



1. Open the left cover.
2. Original feed unit (p.3 "Original Feed Unit")
3. Pick-up roller [A] (x 1)

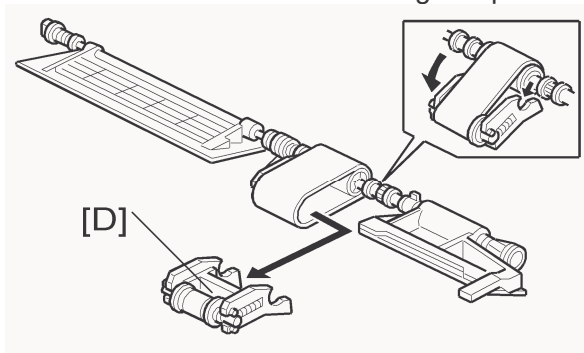
1.2.3 FEED BELT



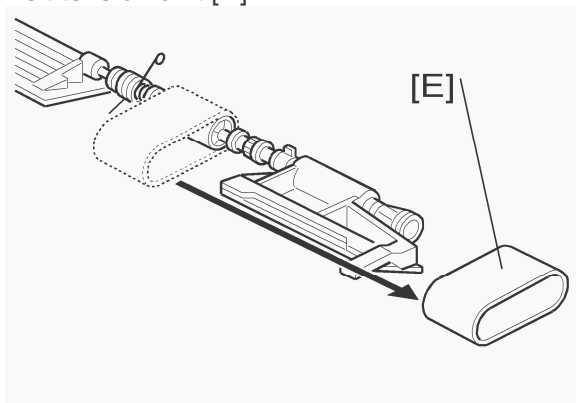
1. Open the left cover.
2. Original feed unit (see p.3 "Original Feed Unit")
3. Feed belt cover [A] (spring x 1)

Note

- When reassembling the feed belt cover, make sure that the projection [B] of the feed belt cover is on the guide plate rear [C].

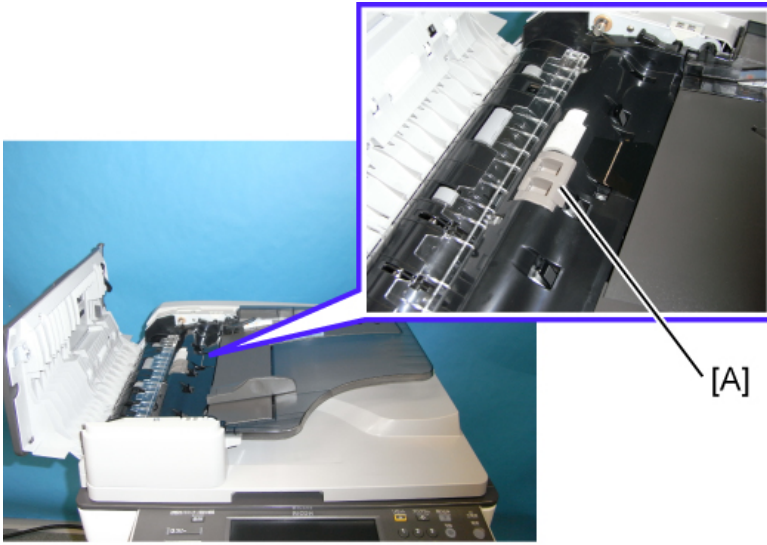


4. Belt tension unit [D]



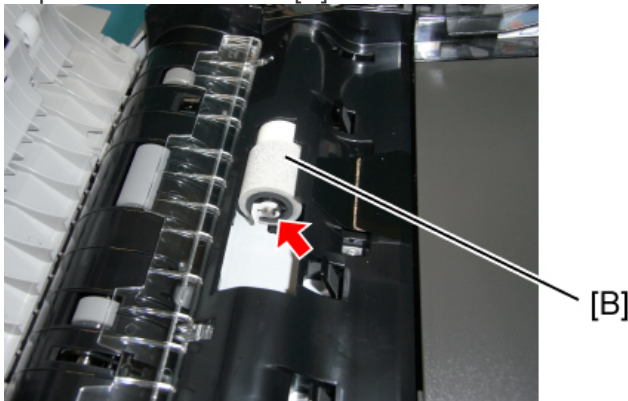
5. Feed belt [E].

1.2.4 SEPARATION ROLLER



d578r503

1. Original Feed Unit (see p.3 "Original Feed Unit").
2. Separation roller cover [A].

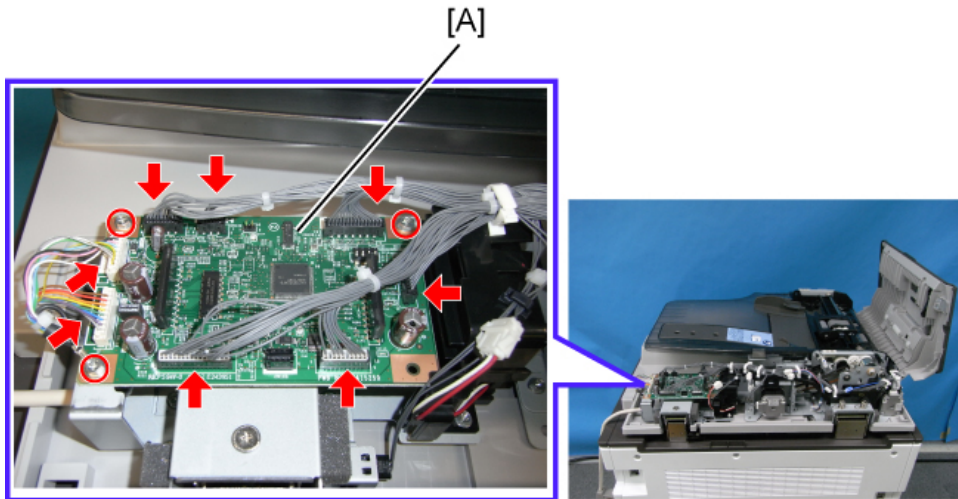


d578r504

3. Separation roller [B] (see icon) x 1)

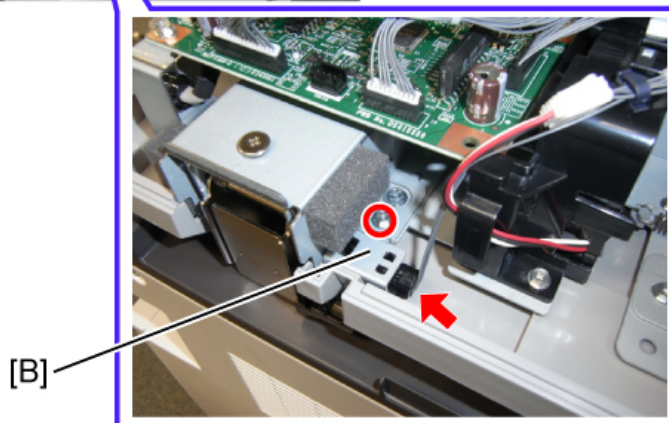
1.3 ELECTRICAL COMPONENTS

1.3.1 ARDF DRIVE BOARD AND DF POSITION SENSOR



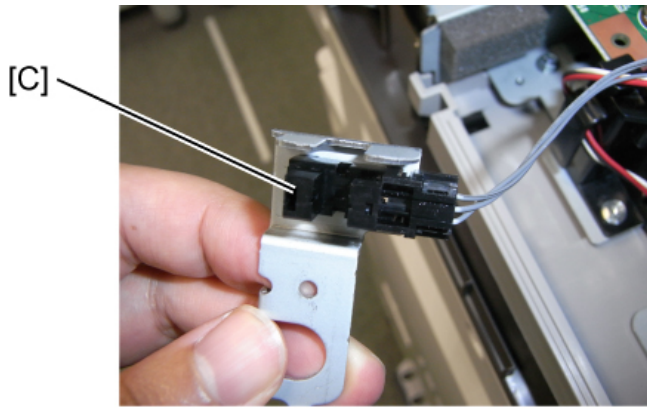
d578r505

1. Rear cover (🔧 p.1 "Rear Cover")
2. ARDF drive board [A] (🔧 x 3, all 📡s)



d578r506

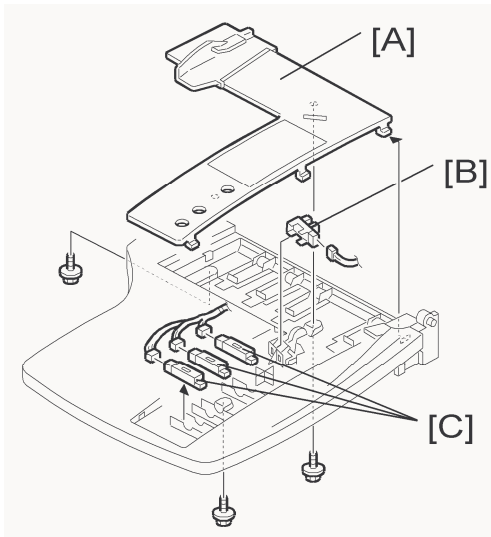
3. DF position sensor with bracket [B] (🔧 x 1, 📡 x 1)



d578r507

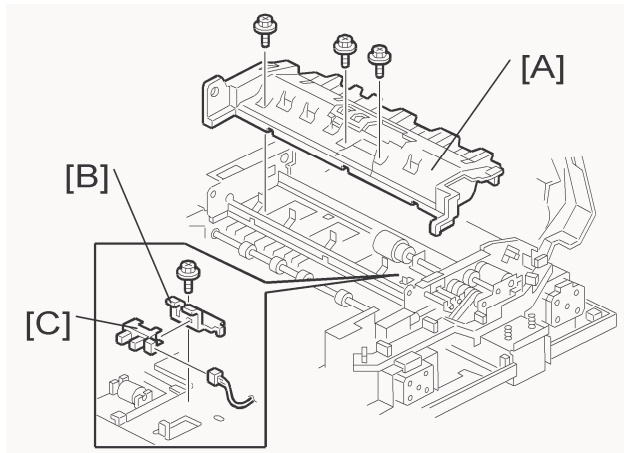
1. DF position sensor [C] (hook x 2)

1.3.2 ORIGINAL LENGTH SENSORS AND TRAILING EDGE SENSOR



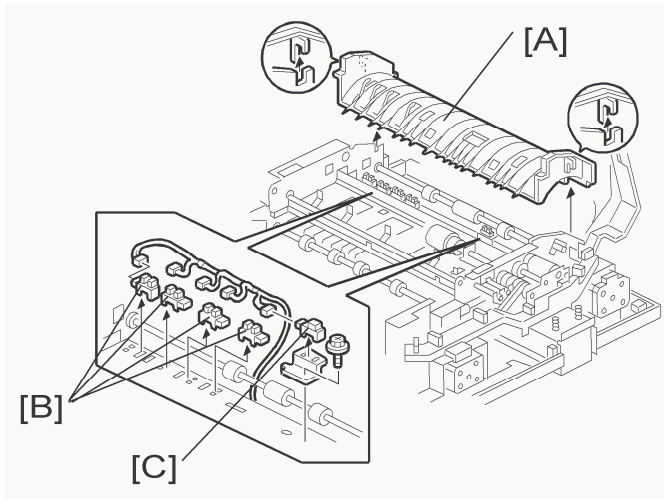
1. Original Tray (📄 p.2 "Front Cover and Original Tray")
2. Tray cover [A] (🔩 x 3)
3. Original trailing edge sensor [B] (📏 x 1)
4. Original length sensors [C] (📏 x 1 each)

1.3.3 ORIGINAL SET SENSOR



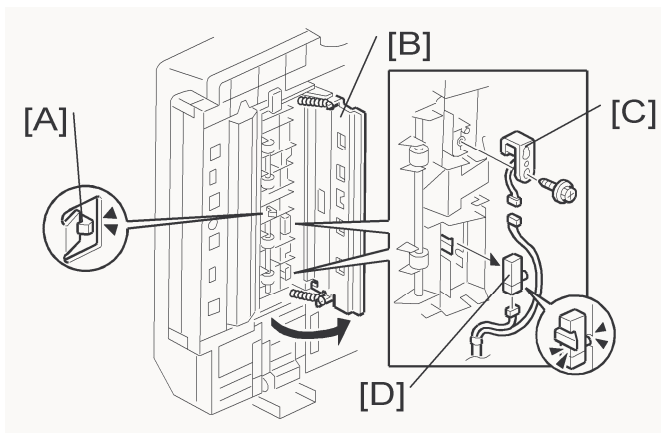
1. Open the left cover.
2. Original feed unit (p.3 "Original Feed Unit")
3. Original tray (p.2 "Front Cover and Original Tray")
4. Original feed-in guide plate [A] (x 3).
5. Original set sensor bracket [B] (x 1)
6. Original set sensor [C]

1.3.4 ORIGINAL SIZE SENSORS AND SKEW CORRECTION SENSOR



1. Original feed-in guide plate (p.8 "Original Set Sensor")
2. Original turn guide plate [A] (hook x 1).
3. Original width sensors [B] (x 1 each) and skew correction sensor [C] with bracket (x 1, x 1)

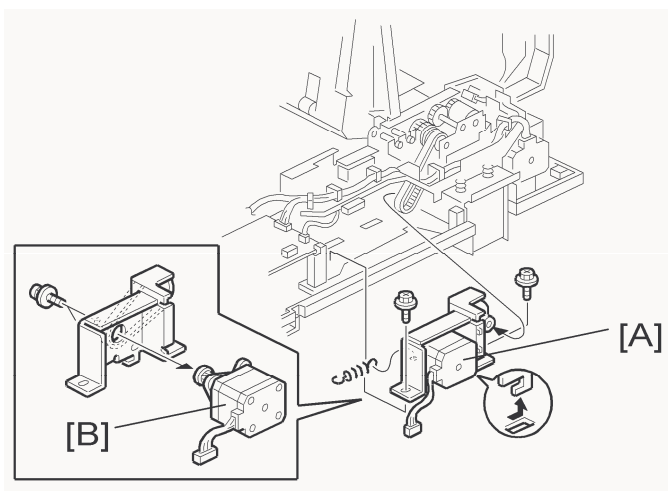
1.3.5 STAMP SOLENOID AND ORIGINAL EXIT SENSOR



1. Open the ARDF.
2. Remove the left edge of the platen sheet.
3. Release the hook [A].
4. Open the original exit guide plate [B]
5. Stamp solenoid [C] (🔩 x 1, 📌 x 1)
6. Original exit sensor [D] (📌 x 1, hook x 1)

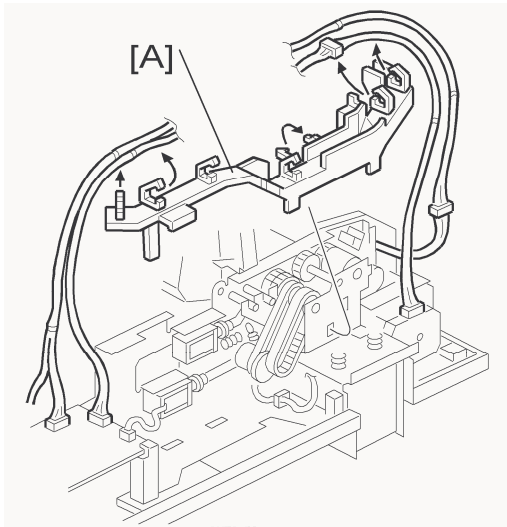
1.4 ORIGINAL FEED DRIVE

1.4.1 FEED MOTOR

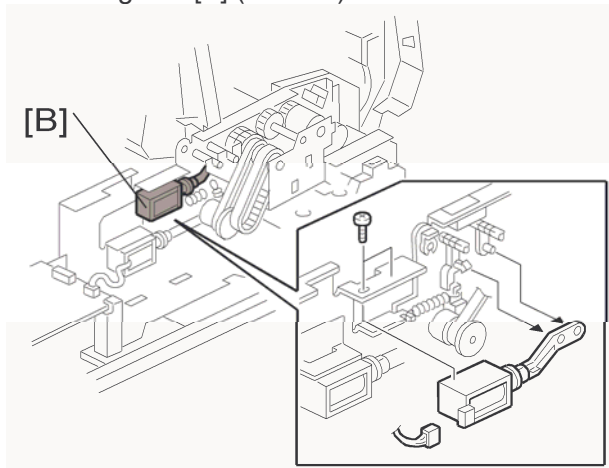


1. Rear cover (🔩 p.1 "Rear Cover")
2. Feed motor with bracket [A] (🔩 x 2, 📦 x 1, spring x 1)
3. Feed motor [B] (🔩 x 2)

1.4.2 PICK-UP SOLENOID

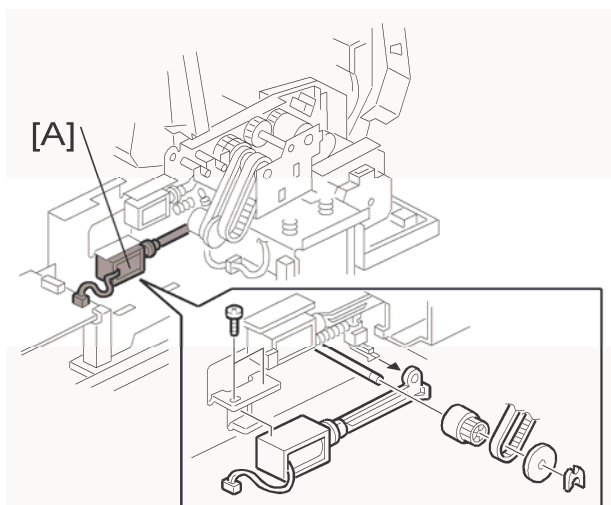


1. Rear cover (see p.1 "Rear Cover")
2. Harness guide [A] (all [A]s)



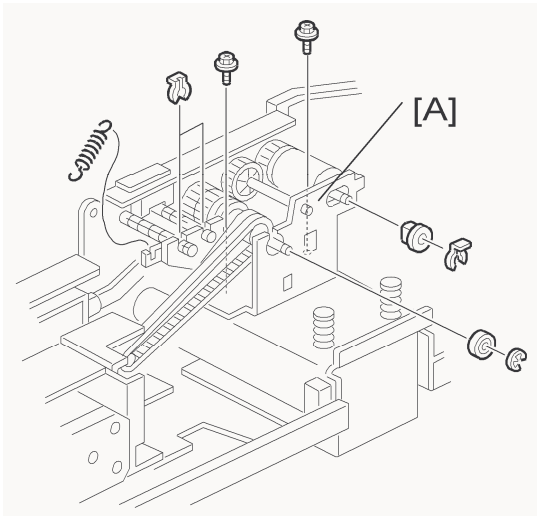
3. Pick-up solenoid [B] ([B] x 2, [B] x 1)

1.4.3 INVERTER SOLENOID

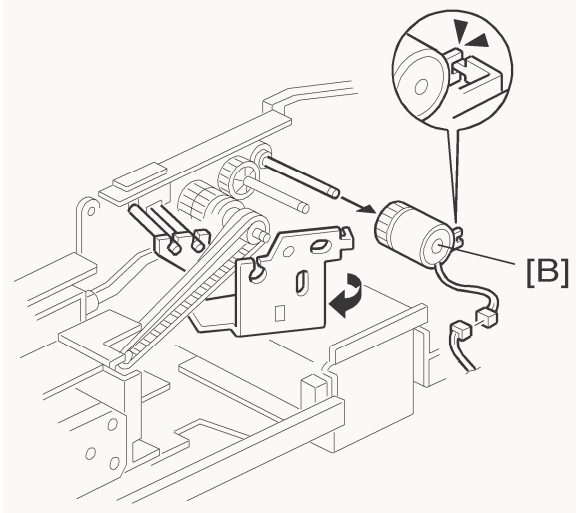


1. Rear cover (🔍 p.1 "Rear Cover")
2. Harness guide (🔍 p.11 "Pick-up Solenoid")
3. Inverter solenoid [A] (🔧 x 2, 📦 x 1, 🌀 x 1, gear x 1, gear cover x 1)

1.4.4 FEED CLUTCH

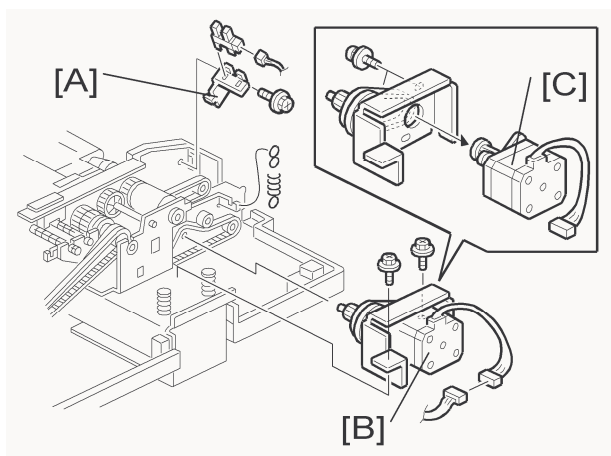


1. Rear cover (see p.1 "Rear Cover")
2. Harness guide (see p.11 "Pick-up Solenoid")
3. Bracket [A] (see x 2, see x 3, see x 1, bushing x 1, spring x 1)



4. Slide the bracket.
5. Feed clutch [B] (see x 1)

1.4.5 TRANSPORT MOTOR



1. Rear cover (p.1 "Rear Cover")
2. Harness guide (p.11 "Pick-up Solenoid")
3. Left cover sensor with bracket [A] (x 1, x 1)
4. Transport motor with bracket [B] (x 2, x 1, spring x 1)
5. Transport motor [C] (x 2)